

DRUM WHEEL BRAKE KIT

QUICK INSTALLATION GUIDE

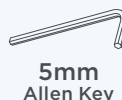
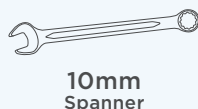
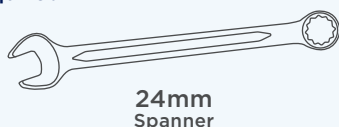
This guide is intended to explain the correct set up procedure for the Drum Wheel Brake Kit for the Aspire Evoke 2 Wheelchair.

For further operating instructions, refer to the product User Manual.

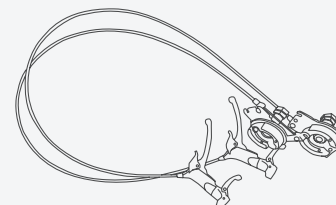
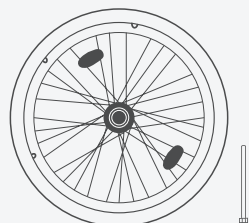
CODE	DESCRIPTION	SUITS				
		Evoke 2	Evoke 2 JNR	Rehab RX JNR	Rehab RX	Rehab RS
DRUM BRAKES						
WCA848510	Rear Wheels w/ Drum Brakes Kit - 16in	—	●	●	●	●
WCA848520	Rear Wheels w/ Drum Brakes Kit - 20in	—	●	○	●	●
WCA848500	Rear Wheels w/ Drum Brakes Kit - 24in	●	—	—	○	○

○ - Comes as Standard Feature

Tools Required:

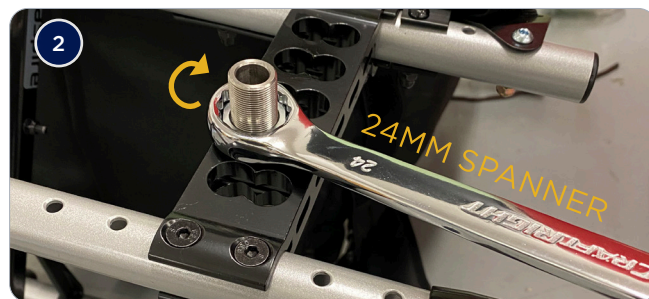
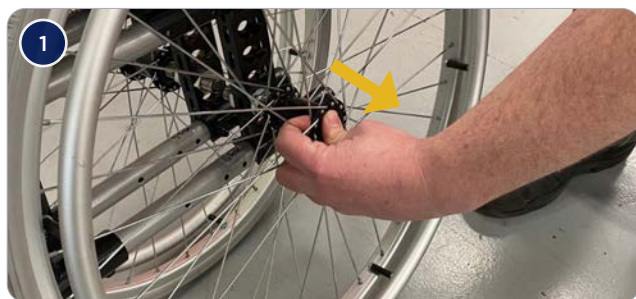


Carton Contents:



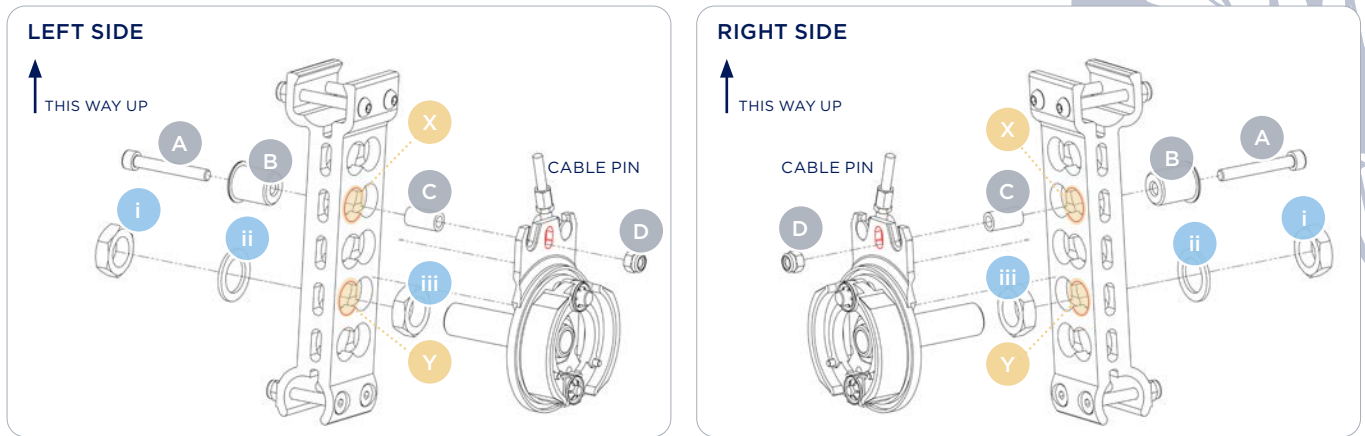
INSTALLATION GUIDE

Removing Camber Kit



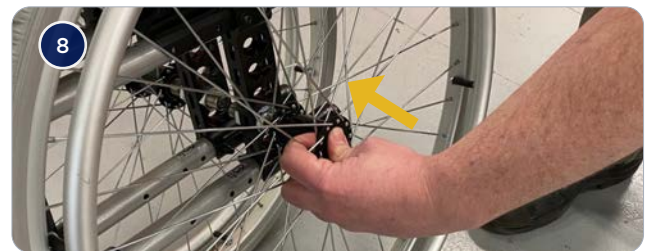
- 1 Remove quick release axle from wheelchair by pushing in spring button and pulling wheel outwards.
- 2 Lay the wheelchair on its side, remove camber kit from wheelchair frame using a 24mm spanner.

Installing Drum Brakes



- 3 Ensure the direction of the brake kit is facing upwards towards the top of the wheelchair.
- 4 Remove nut **i** and washer **ii**, Slide drum brake through hole **Y**.
- 5 Stand wheelchair back onto it's wheels (from side lying position) ensuring cable pin stays pointing towards the top of the wheelchair.
- 6 Mount hardware **A**, **B**, **C**, **D**, through hole **X** on wheelchair and drum brake, this must be done in alphabetical order as shown. Secure in place with 10mm Spanner & 5mm Allen key.

Installing Hand Brakes



- 7 Mount hand brake to wheelchair handle & fasten in place with a 4mm Allen key.
- 8 Fasten wheel to wheelchair by locking in place with the quick release axle provided in the box.
- 9 Repeat steps 1 to 8 for the other side.

Adjusting Brake Strength



If brakes require tightening or loosening, follow below steps.

- 1 Remove wheel and quick release axle from wheelchair, slide out brake cable.
- 2 Adjust brake strength: Tighten (Clockwise) & Loosen (Anti-Clockwise).
- 3 Reposition brake cable & wheel and lock into place with quick release axle.